

A Premier, Eco-Friendly, Private Gated Community in south Asheville, North Carolina



- Up to 30% OFF Select Lots in Phases I & II
- Only 9 miles from Downtown Asheville
- Very close to Shops, Dining, Glen Arden/Cane Creek/TC Roberson Schools, Hospital, Parkway & Airport
- Private Estate Homesites in a 96 Acre Gated Community
- Energy Efficient & NC Green Built Home + Land Packages
- Select Homesites up to \$15K Site Prep
- Natural Gas, Septic, City H2O or Well, High Speed Internet, Cable, Cell Reception, & Underground Utilities
- Community Greenspace for Relaxing, Fishing, or Hiking
- Southern Exposure & on South Side of Merrill Mountain
- Restrictive Covenants to Protect Your Investment
- Security Gates Open from 6am to 10pm
- Low County Taxes & HOA Fees





Up to 30% Off Select Lots & Pre-Construction Pricing

Intro. Price	List Price	Lot#	Acres	Lot Description
\$ 77,500	\$ 110,000	11B	0.57	Ready to Build, Corner mostly level lot w/ \$15K of site prep
\$ 87,500	\$ 125,000	9B	0.77	Ready to Build, private, level/sloping lot, w/ Merrill Mt. views w/ \$15K of site prep
\$ 108,000	\$ 135,000	12/13B	0.90	Ready to Build, level/sloping lot & w/ \$15K of site prep
\$ 149,000	\$ 163,900	12A	0.90	Ready to Build, level/sloping lot borders Greenspace+ 4Br Septic/Water & plus site prep = \$17K of improvements
\$ 99,500	\$ 145,000	6A	0.80	Sloping lot, very wooded and extremely private
\$ 99,500	\$ 145,000	7A	0.70	Sloping lot, very wooded and extremely private
\$ 115,000	\$ 165,000	10A	1.00	Ready to Build, corner, wooded, level and sloping lot with views of Greenspace, partial long range mt. views, & includes \$15K of site prep
\$ 136,500	\$ 195,000	8A	1.10	Sloping wooded lot w/ great long range mt. view potential
\$ 157,500	\$ 225,000	9A	1.20	Sloping wooded lot w/ great long range mt. potential
\$ 199,500	\$ 295,000	3/4A	1.30	Ready to Build, extremely private lot, level build site & sloping lot with long range mountain views w/ \$15K of site prep & partial landscaping
\$ 199,500	\$ 295,000	3/4B	1.60	Ready to Build, level/sloping lot & w/ \$15K of site prep

SOLD:

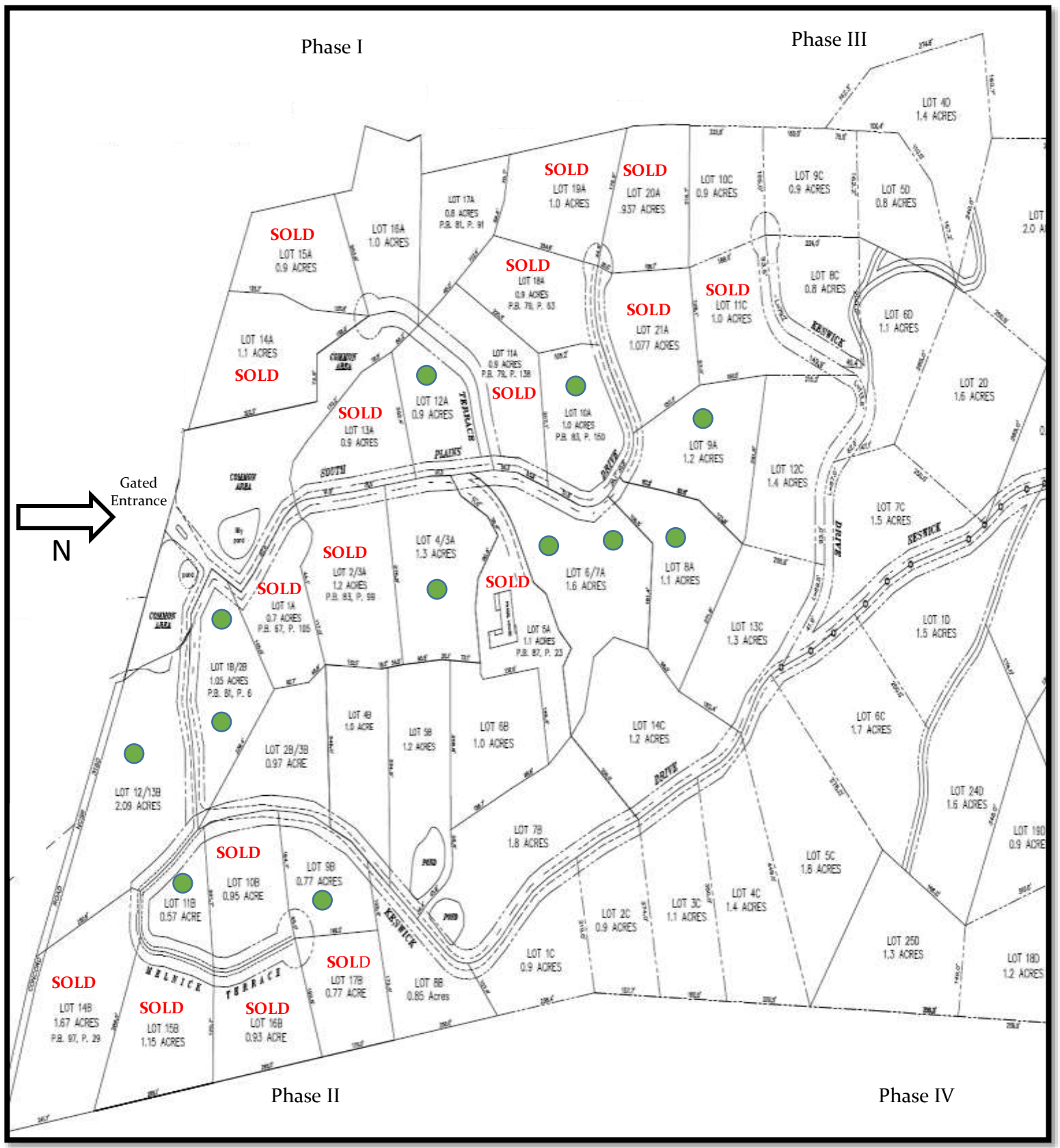
Phase I #1A, 2/3A, 5A, 11A, 13A, 14A, 15A, 18A, 19A, 20A, 21A
 Phase II #2B, 10B, 14B, 15B, 16B
 & Phase III #11C

** Keswick Development LLC © 2017 -18 reserves the right to change pricing or lot dimensions without notice. The Site Map is a conceptual rendering and should not be relied upon for accuracy. This is not intended to be a real estate sales offer or solicitation in any jurisdiction where prohibited by law or where prior registration is required. Keswick Development, LLC reserves the right to make changes to all aspects of plan without notice.*

KESWICK HILLS

Gracious Mountain Living

Phase I & II Available Homesites = ●
 Phases III & IV = Future Releases



Enjoy Life at Keswick Hills



- Limited Opportunities for 30% Off & Pre-Construction Pricing
- Private Homesites from .5+ to 2+ acres start in the \$70K's
- Existing Luxury Homes from \$500Ks to \$1M+
- Suggested Builders Available Upon Request
- Visit KeswickHills.com
- Schedule Your Appointment Today

Discover a way of life based on simplicity, beauty and convenience.

Keswick Hills' low density, thoughtfully Master Planned Gated Community promotes green living and respects environmental preservation.

Enjoy our mountain views and nature right out your front door! Neighbors, friends and families fish in our stocked pond, hike, play, picnic, or relax in our beautiful and peaceful Greenspace.

Come to Keswick Hills to enjoy the magnificence of the Blue Ridge Mountains and nearby hiking, biking, golfing, kayaking, fly-fishing and endless cultural experiences that Asheville has to offer.

This special community is an exceptional place to call home whether you are retirees, professionals, or families.

Directions: South on Hwy 25/Hendersonville Road to Left on Mills Gap Road 1 Mile to Left on Concord Road 1 Mile to Left on Keswick Drive

Sally Baker

Direct: 828-691-3391
sallyb@beverly-hanks.com

Eric Attreau

Direct: 828-215-0393
eattreau@beverly-hanks.com

